

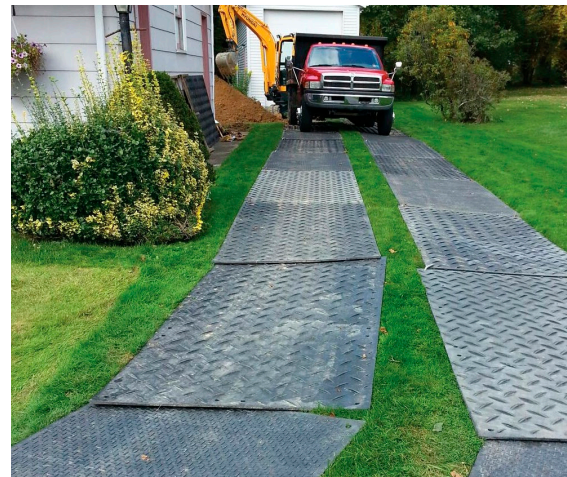
The ORIGINAL Ground Protection Mats

Don't be fooled by knock-offs!



Ground Protection Matting

- Whether you need temporary access through harsh environments or need to get your equipment through a yard without damage, Checkers has you covered
- Mats for any size equipment, any application—with the highest load bearing capacity available on the market
- Durable, weather-resistant mats available in a full range of options



The Original Ground Protection Mats

Don't be fooled by knock-offs!

AlturnaMATS® • VersaMAT®
TrakMAT® • LibertyMAT®

For more than 30 years, Checkers has been the market leader for innovative ground protection. With the largest and most respected range of matting on the market, Checkers mats are durable and robust. Mats are offered in a variety of sizes, colors and traction surfaces ranging from rugged traction to low-profile pedestrian traction to smooth.



Why Use Ground Protection Mats?

Unmatched Turf Protection

Using ground protection mats helps to disperse heavy loads and minimize soil compaction, decreasing soil erosion and possible water contamination. The flexible construction follows the contours of the ground, delivering a highly effective solution on sloping or undulating ground conditions.



Superior Temporary Access

Ground protection mats get equipment safely through mud, sand, snow and swampland conditions. Access to and from remote sites and a stable work area are critical safety requirements in many industries, such as construction, landscaping, oil & gas, utilities, and civil engineering. Mats with pedestrian-friendly treads provide safe walking paths and temporary sidewalks.



Save Thousands Compared to Wood

Checkers™ HDPE Ground Protection Mats
Superior load capacity—up to 120 tons
Impressive traction and grip in any weather conditions
Flexible—conform to slopes and inclines
Weather resistant—no warping, splintering, or breaking
Reliable long term

VS



Plywood

No definitive load bearing rating
No traction; mud or ice buildup creates hazardous conditions for vehicles and personnel
Unsuitable for slopes or inclines
Absorbs water and liquids which accelerates rotting
Limited life span, resulting in a higher cost over time

Choose Your Matting Solution

Load Capacity

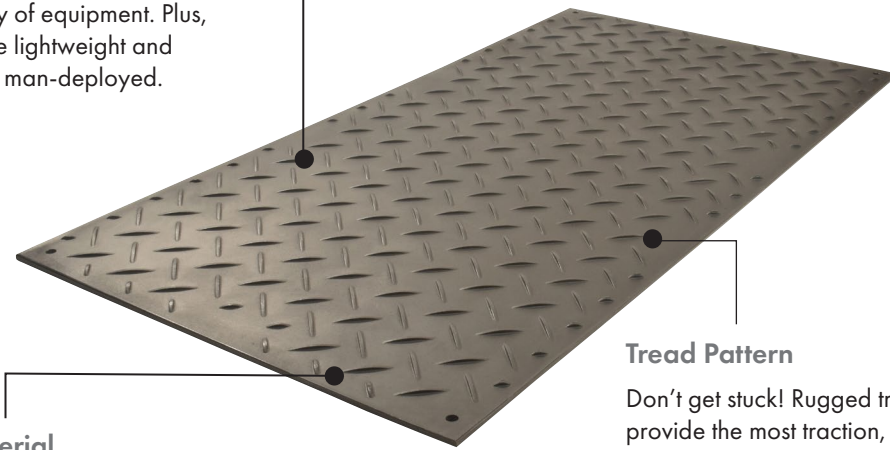
With load bearing up to 120 tons, mats provide secure solutions for a variety of equipment. Plus, they're lightweight and easily man-deployed.

Material

HDPE (high-density polyethylene) mats are unaffected by weather, plus chemical and oil resistant. The plastic is flexible, conforming to uneven ground conditions to provide a secure surface.

Tread Pattern

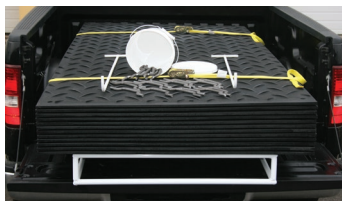
Don't get stuck! Rugged treads provide the most traction, even in wet or icy conditions. Lower profile treads are ideal for pedestrians or walkways. Choose optional smooth sides to further protect hard surfaces.



Optional hand holes make handling easy.







Clear mats let the sun shine through to prevent browning of grass.



Available in convenient Mat-Pak bundles, complete with accessories.

A Complete Line of HDPE Mats

Rugged, durable HDPE mats with a complete range of options

	 AlturnaMATs®	 VersaMAT®	 TrakMAT®	 LibertyMAT®
	Aggressive diamond cleat tread ideal for heavy vehicle traffic	Low-profile flat oval tread ideal for pedestrian applications	Power cylinder tread improves grip, ideal for large vehicles	Chevron traction tread is less aggressive to keep sensitive turf intact
Load bearing capacity*	120 tons	120 tons	90 tons	80 tons
Surface tread	Two standard options: Diamond cleat (both sides) or Diamond cleat / smooth	Two standard options: Flat oval / diamond cleat or Flat oval / smooth	Two standard options: Power cylinder nub (both sides) or Power cylinder nub / smooth	Chevron traction (both sides)
Available sizes	2 x 4 ft, 2 x 6 ft, 2 x 8 ft; 3 x 6 ft, 3 x 8 ft; 4 x 8 ft	2 x 8 ft, 3 x 8 ft, 4 x 8 ft	22 in x 8 ft, 3 x 8 ft, 44 in x 8 ft	4 x 8 ft
Available colors	Black or Clear	Black or Clear	Black or Cool Green	Black
Hand holes	Optional	Optional	Standard	Standard
Warranty	Limited lifetime	Limited lifetime	6 year limited warranty	1 year limited warranty

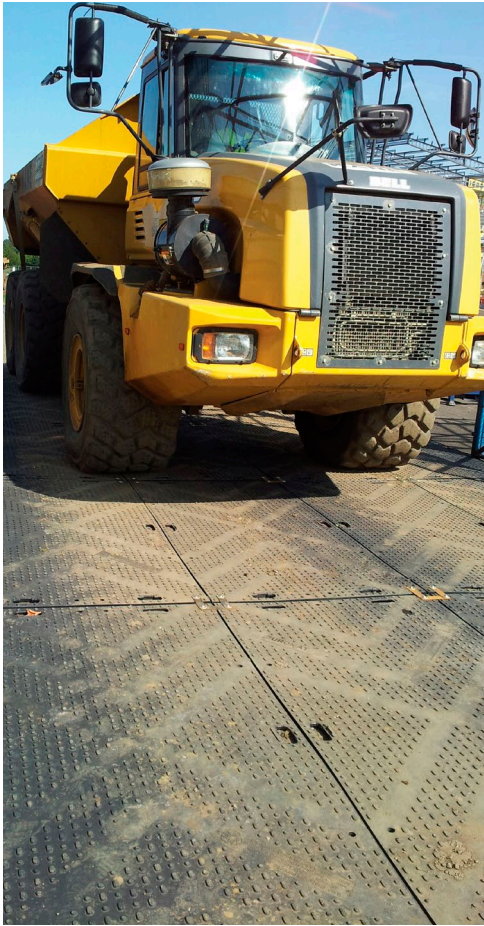
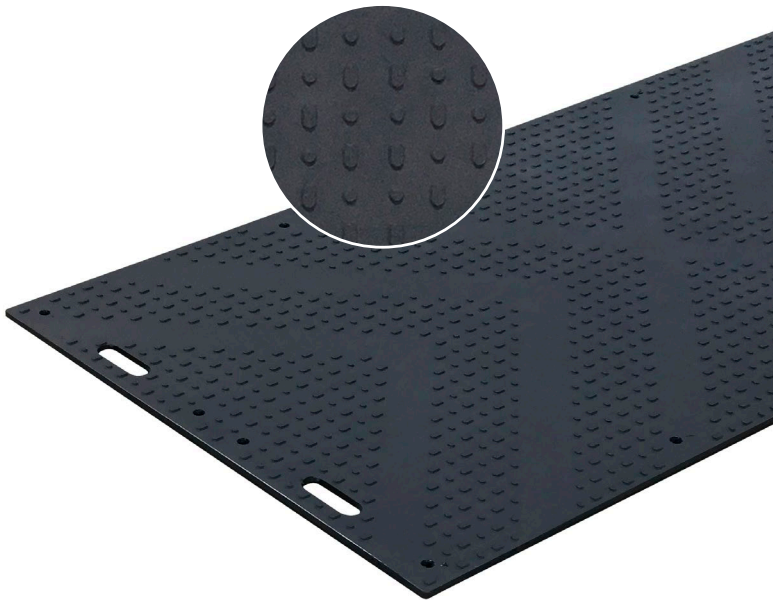
* Load bearing capacity is subject to ground conditions. Sizing is subject to a manufacturing variance of +/- 5%.

Moderate tread provides traction while keeping soft, sensitive turf intact

With a load bearing capacity of 80 tons*, our mat is a medium-duty ground protection mat ideal for a wide range of applications including temporary roadways, work pads, material storage areas, or as pedestrian access. The unique chevron traction surface offers optimal grip and improved forward motion of vehicles but is still pedestrian-friendly.

Our mat is lightweight, economical, and includes strategically-positioned hand holes for fast and easy install. Manufactured from 100% recycled high-density polyethylene, the mat is durable and weather-resistant. The flexible design allows the mat to follow the contours of undulating or sloping ground conditions.

- Chevron traction surface design for increased grip
- Hand holes for easy maneuverability and fast setup
- Molds to uneven or undulating ground conditions due to its flexible design
- One-year limited warranty



Load capacity*	80 tons (160,000 lb; 72,575 kg)
Surface tread	Chevron traction
Material	100% recycled high-density polyethylene (HDPE)
Thickness	0.5 in (1.27 cm)
Color options	Black

*Load bearing capacity is subject to ground conditions. Sizing is subject to a manufacturing variance of +/- 5%.

Model	Description	Width	Length	Weight	CA Prop 65
LIB48	Black Mat	47.5 in (1.21 m)	95 in (2.41 m)	77 lb (39 kg)	

⚠ WARNING: This product can expose you to chemicals including carbon black, which is known to the State of California to cause cancer and birth defects or other reproductive harm. For more information go to www.P65Warnings.ca.gov.



Outrigger Crane Pads

Checkers™ outrigger crane pads are made from a special formulation high-quality polyethylene—they will not splinter, crack, are non-conductive, and will not absorb water. They are easy to install and provide a safe working environment for heavy equipment with outrigger arms. The unique design allows each pad to adapt to the working surface and return to its original shape once the work is complete.

These strong and durable products are easy to clean, are chemical and oil resistant, easy to store, and long-lasting. These outrigger pads are an efficient and cost-effective solution for outrigger support. Despite being incredibly strong and durable, the pads have a lightweight design making them easy to install and move around. As they're impermeable to water, they can be used in all weather conditions and their hard-wearing structure makes them unbreakable during normal working conditions.

- High load capacity designed to fully support vehicles and cranes without warping or splintering
- Engineered to bend but not break
- Recovery memory after bending restores original shape
- Safety textured surface and orange tough grip handles improve grip and stability



Model	Load capacity*	45 deg. load capacity*	Length	Width	Thickness	Weight	Prop 65
PAD1515.75	45,000 lb (20,412 kg)	20,000 lb (9,072 kg)	15 in (38.1 cm)	15 in (38.1 cm)	0.75 in (1.9 cm)	5.5 lb (3.4 kg)	—
PAD18181	55,000 lb (24,948 kg)	30,000 lb (13,608 kg)	18 in (45.7 cm)	18 in (45.7 cm)	1 in (2.5 cm)	11 lb (5 kg)	—
PAD24241	60,000 lb (27,216 kg)	35,000 lb (15,876 kg)	24 in (61 cm)	24 in (61 cm)	1 in (2.5 cm)	20 lb (9.1 kg)	—
PAD24242	62,000 lb (28,123 kg)	40,000 lb (18,144 kg)	24 in (61 cm)	24 in (61 cm)	2 in (5 cm)	38 lb (17.2 kg)	—
PAD30301	81,000 lb (36,741 kg)	41,000 lb (18,598 kg)	30 in (76.2 cm)	30 in (76.2 cm)	1 in (2.5 cm)	31 lb (14 kg)	—
PAD36361	93,000 lb (42,185 kg)	43,000 lb (19,505 kg)	36 in (91.4 cm)	36 in (91.4 cm)	1 in (2.5 cm)	45 lb (20.4 kg)	—
PAD48481	135,000 lb (61,236 kg)	52,000 lb (23,587 kg)	48 in (122 cm)	48 in (122 cm)	1 in (2.5 cm)	80 lb (36.3 kg)	—
PAD30302	85,000 lb (38,556 kg)	43,000 lb (19,505 kg)	30 in (76.2 cm)	30 in (76.2 cm)	2 in (5 cm)	62 lb (28 kg)	—
PAD36362	98,000 lb (44,253 kg)	45,000 lb (20,412 kg)	36 in (91.4 cm)	36 in (91.4 cm)	2 in (5 cm)	90 lb (40.8 kg)	—
PAD48482	140,000 lb (63,504 kg)	55,000 lb (24,948 kg)	48 in (122 cm)	48 in (122 cm)	2 in (5 cm)	160 lb (72.6 kg)	—

*Load bearing capacity is subject to ground conditions. Sizing is subject to a manufacturing variance of +/- 5%.



Ground Protection Matting

- Whether you need temporary access through harsh environments or need to get your equipment through a yard without damage, Checkers has you covered
- Create temporary roadways, working platforms, or pedestrian pathways
- High load bearing capacity for any size equipment



Why Ground Protection?

Checkers’ market-leading ground protection mats deliver safe and robust temporary access, roadways or working platforms for construction vehicles and site personnel.

Ground protection mats get equipment safely through mud, sand, snow and swampland conditions. Access to and from remote sites and a stable work area are critical safety requirements in many industries such as construction, landscaping, oil & gas, utilities, and civil engineering. Mats also prevent environmental damage to agricultural land, heritage sites or sensitive ecosystems, and cross contamination between sites. Using ground protection mats helps to disperse heavy loads and minimize soil compaction, decreasing soil erosion and possible water contamination.

Checkers has the largest and most respected range of lightweight temporary access and ground protection matting on the market. Checkers’ mats are durable and robust, offering a variety of sizes, colors and traction surfaces ranging from rugged traction to low-profile pedestrian traction to smooth.



Choose Your Matting Solution

Load Capacity

With load bearing up to 120 tons, mats provide secure solutions for a variety of equipment. Plus, they're lightweight and easily man-deployed.

Material

HDPE (high-density polyethylene) mats are unaffected by weather, plus chemical and oil resistant. The plastic is flexible, conforming to uneven ground conditions to provide a secure surface.

Tread Pattern

Don't get stuck! Rugged treads provide the most traction, even in wet or icy conditions. Lower profile treads are ideal for pedestrians or walkways. Choose optional smooth sides to further protect hard surfaces.

Product	Load capacity (ton)	Material	Tread pattern (per side)	Thickness	Warranty	Page
AlturaMATS®	120	Recycled HDPE	Diamond cleat / diamond cleat	0.5 inch	Limited Lifetime	104
VersaMAT®	120	Recycled HDPE	Flat oval / diamond cleat	0.5 inch	Limited Lifetime	105
TrakMat®	90	Recycled HDPE	Power cylinder nub / smooth	0.5 inch	6 year	108
LibertyMat®	80	Recycled HDPE	Chevron (high grip) / chevron (pedestrian)	0.5 inch	1 year	108
Mud-Traks®	34-103	Fiberglass	Grid / grid	0.3125 inch - 0.4 inch	1 year	109

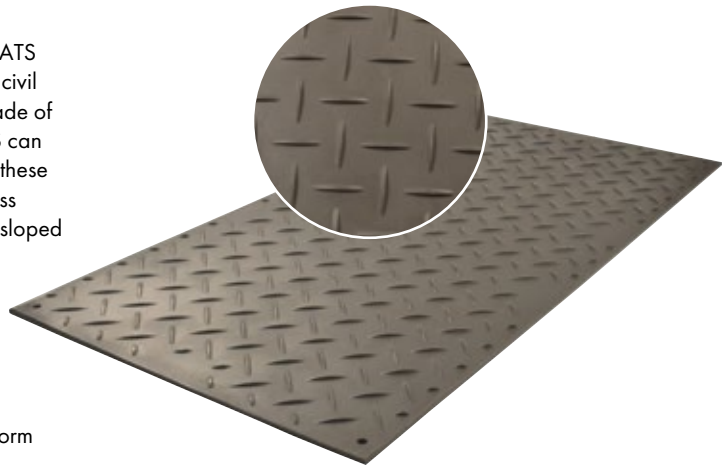


AltunaMATS® Ground Protection Mats

Protect your turf and save thousands on ground restoration cost

With an aggressive diamond plate tread and high load capacity, AltunaMATS are ideal for use over soft or sensitive ground conditions in the construction, civil engineering, ground work, and events industries. These rugged mats are made of 0.5-in. thick polyethylene making them virtually indestructible. AltunaMATS can withstand loads of up to 120 tons*, and its flexible construction means that these mats will follow the contours of the ground to deliver a highly-effective access solution over undulating or sloping ground conditions. When using mats on sloped surfaces, connect mats using links to secure together.

- Flexible construction contours to ground conditions
- Diamond cleat tread surface provides impressive grip
- Man-deployable—easily install, no equipment necessary
- Optional hand holes for easy maneuverability
- Connect together in minutes to create a secure trackway or working platform
- Unaffected by heat or cold, plus chemical and oil resistant
- Optional smooth side, when hard surface protection is required
- Limited lifetime warranty



Load capacity*	120 tons (240,000 lb; 108,862 kg)
Surface tread	Diamond cleat (both sides) or diamond cleat/smooth
Material	100% recycled high-density polyethylene (HDPE)
Thickness	0.5 in (1.27 cm)
Color options	Black or clear

*Load bearing capacity is subject to ground conditions. Sizing is subject to a manufacturing variance of +/- 5%.

Diamond Cleat (both sides) Models	Diamond Cleat / Smooth Models	Description	Length	Width	Weight	Prop 65
AM24	AM24S1	Black Mat	4 ft (1.22 m)	2 ft (0.61 m)	21.5 lb (9.8 kg)	⚠
AM26	AM26S1	Black Mat	6 ft (1.83 m)	2 ft (0.61 m)	32.4 lb (14.6 kg)	⚠
AM28	AM28S1	Black Mat	8 ft (2.44 m)	2 ft (0.61 m)	43 lb (19.5 kg)	⚠
AM36	AM36S1	Black Mat	6 ft (1.83 m)	3 ft (0.91 m)	51 lb (23.1 kg)	⚠
AM38	AM38S1	Black Mat	8 ft (2.44 m)	3 ft (0.91 m)	64 lb (29.3 kg)	⚠
AM48	AM48S1	Black Mat	8 ft (2.44 m)	4 ft (1.44 m)	86 lb (39 kg)	⚠
CM24	CM24S1	Clear Mat	4 ft (1.22 m)	2 ft (0.61 m)	21.5 lb (9.8 kg)	—
CM26	CM26S1	Clear Mat	6 ft (1.83 m)	2 ft (0.61 m)	32.4 lb (14.6 kg)	—
CM28	CM28S1	Clear Mat	8 ft (2.44 m)	2 ft (0.61 m)	43 lb (19.5 kg)	—
CM36	CM36S1	Clear Mat	6 ft (1.83 m)	3 ft (0.91 m)	51 lb (23.1 kg)	—
CM38	CM38S1	Clear Mat	8 ft (2.44 m)	3 ft (0.91 m)	64 lb (29.3 kg)	—
CM48	CM48S1	Clear Mat	8 ft (2.44 m)	4 ft (1.44 m)	86 lb (39 kg)	—

⚠ **WARNING:** This product can expose you to chemicals including Carbon Black, which is known to the State of California to cause cancer and birth defects or other reproductive harm. For more information go to www.P65Warnings.ca.gov.



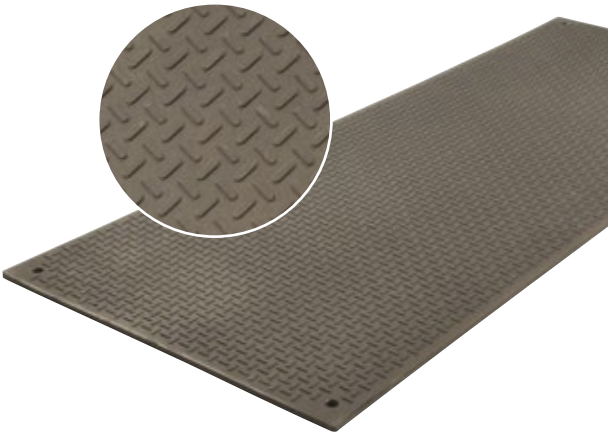
VersaMAT® Ground Protection Mats

Multifunction mat suitable for both heavy equipment and pedestrians—ideal for scissor lifts, wheelbarrows, parking lots, even skid steers

VersaMAT features a low-profile slip-resistant traction surface making it ideal for multiple applications. It comes standard with the more aggressive AltunaMATS® tread on the opposite side, making it versatile. With a high load-bearing capacity of 120 tons*, VersaMAT can be used as a vehicle track way, vehicle parking area, or staging area for supplies and equipment. Mats are lightweight and easily deployed by hand, and are available with optional hand holes.

Mats are manufactured from 100% recycled high-density polyethylene, durable and resistant to all weather conditions. The flexible construction follows the contours of the ground, delivering a highly effective access solution on sloping or undulating ground conditions. Mats can be connected together using our flat Turn-A-Links, E-Z Link, or polyurethane connectors, ensuring you have a firm and secure trackway.

- Low-profile tread ideal for pedestrian applications
- Build a roadway or working platform in minutes
- Leave turf smooth, even in soft conditions
- Simply hosing down leaves the mats clean
- Lock together with Turn-A-Links to form a continuous roadway
- Optional smooth side, when hard surface protection is required
- Limited lifetime warranty



Load capacity*	120 tons (240,000 lb; 108,862 kg)
Surface tread	Flat oval / diamond cleat or flat oval / smooth
Material	100% recycled high-density polyethylene (HDPE)
Thickness	0.5 in (1.27 cm)
Color options	Black or clear

*Load bearing capacity is subject to ground conditions. Sizing is subject to a manufacturing variance of +/- 5%.

Flat Oval / Diamond Cleat Models	Diamond Cleat / Smooth Models	Description	Length	Width	Weight	Prop 65
VM28	VM28S1	Black Mat	8 ft (2.44 m)	2 ft (0.61 m)	43 lb (19.5 kg)	⚠
VM38	VM38S1	Black Mat	8 ft (2.44 m)	3 ft (0.91 m)	64 lb (29.3 kg)	⚠
VM48	VM48S1	Black Mat	8 ft (2.44 m)	4 ft (1.44 m)	86 lb (39 kg)	⚠
CV28	CV28S1	Clear Mat	8 ft (2.44 m)	2 ft (0.61 m)	43 lb (19.5 kg)	—
CV38	CV38S1	Clear Mat	8 ft (2.44 m)	3 ft (0.91 m)	64 lb (29.3 kg)	—
CV48	CV48S1	Clear Mat	8 ft (2.44 m)	4 ft (1.44 m)	86 lb (39 kg)	—

⚠ **WARNING:** This product can expose you to chemicals including Carbon Black, which is known to the State of California to cause cancer and birth defects or other reproductive harm. For more information go to www.P65Warnings.ca.gov.

Clear Mats: the Clear Choice for Healthy Lawns

Clear plastic mats let the sun to shine through for greater turf protection—ideal for golf courses, resorts, homes and cemeteries.

Effects after 5 days: (left to right: clear mat, white mat, black mat)

Black mats show heavy browning of grass & burnt leaves.
White mats show moderate browning & slightly burnt leaves.
Clear mats show no damage.





Connectors

Perfect for AlturnaMAT® and VersaMAT®, all connectors are also compatible with TrakMat® and LiberyMat®

Turn-A-Links lock mats together to form a semi-permanent, yet portable continuous roadway, walkway or working platform. Use single links to connect two mats end-to-end or side-to-side to create a roadway; double links can create a platform by connecting four mats together at the corners. Links are steel with a galvanized coating to protect from rust.

Flat Turn-A-Links offer a lower profile to minimize tripping hazards on walkways, perfect for VersaMAT.

E-Z Links are a quick, convenient linking system ideal for pedestrian applications as well as light, compact equipment (less than 12,000 GVW) when on stable ground conditions. Single or double options available.

Urethane connectors are available two-way to link mats end-to-end and four-way to link four mats at the corners. Use with VersaMAT, TrakMat or LibertyMat.

Model	Description	Weight	Prop 65
RTL-S-G	Single Round Turn-A-Link	0.5 lb	⚠ *
RTL-D-G	Double Round Turn-A-Link	1.5 lb	⚠ *
FTL-S-G	Single Flat Turn-A-Link	0.5 lb	⚠ *
FTL-D-G	Double Flat Turn-A-Link	1.25 lb	⚠ *
EZL-S	Single E-Z Links	0.13 lb	⚠ †
EZL-D	Double E-Z Links	0.25 lb	⚠ †
HDU 2-WAY	Two-Way Urethane Connector	0.5 lb	⚠ †
HDU 4-WAY	Four-Way Urethane Connector	1 lb	⚠ †
U STAKES	U-Stake holds mats in place on sloped terrain	0.75 lb	—



⚠ * **WARNING:** This product can expose you to chemicals including Nickel Compounds, which is known to the State of California to cause cancer and birth defects or other reproductive harm. For more information go to www.P65Warnings.ca.gov.

⚠ † **WARNING:** This product can expose you to chemicals including Carbon Black, Titanium Dioxide, Formaldehyde, and Benzyl Butyl Phthalate, which are known to the State of California to cause cancer and birth defects or other reproductive harm. For more information go to www.P65Warnings.ca.gov.

Why Not Use Plywood?

Plywood	Checkers™ Ground Protection
No definitive load bearing capacity available	Load bearing capacity of up to 120 tons
No traction. Mud or ice buildup creates hazardous conditions for vehicles and personnel	Impressive traction and grip in any weather conditions
Inconsistent strength from sheet to sheet causing premature failure and unsafe working conditions	Performance guaranteed to be consistent from mat to mat
Unsuitable for use on slopes or inclines	Flexible mats conform to slopes and inclines to create secure trackways
Risk of injury from splinters and debris	No warping, splintering, or breaking
Absorbs water and liquids which accelerates rotting	Weather resistant and impervious to water absorption
Risk of cross contamination due to absorption and leaching of oils, fluids, and chemicals	Easily cleaned, with no contamination risk from chemicals, oils, and fluids
Limited life span and must be replaced, maintained / repaired within a short life cycle resulting in a higher cost over time	Reliable long term with a limited lifetime warranty (AlturnaMATS and VersaMAT) Low maintenance HDPE is recyclable at end of life - lowering carbon emissions and landfill waste



Mat-Pak Transporting and Storage System for AlturnaMATS® & VersaMAT® Matting

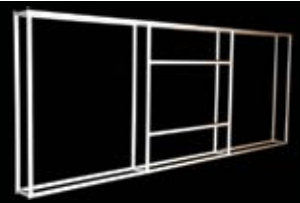
This complete package is the handy way to transport and store ground protection mats

Mat-Paks are a convenient, economical package of 12 mats plus accessories and metal storage-skid rack. Mat-Paks are ideal for tree care, cemetery, and landscaping contractors that need to protect turf from vehicle damage. They are also perfect for well drilling, construction and manufactured housing where getting stuck creates major problems.

Just load the 12 mats onto your truck bed and you're set for making a nearly 50 foot "roadway" to the job site, or you can make a working platform for vehicles and personnel.

Money saving Mat-Paks consist of:

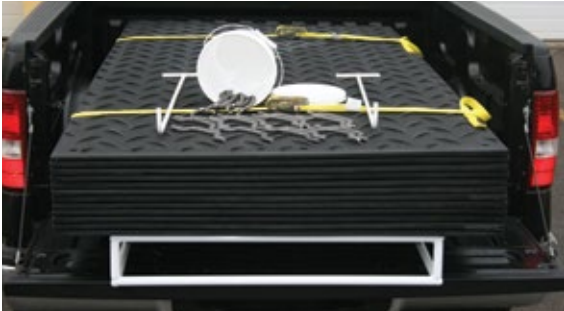
- 12 Ground Protection Mats
- 1 Metal Storage, Skid Rack (capacity: 50 mats)
- 20 Single Turn-a-Links
- 2 Handi-Hooks
- 2 Ratchet Straps



Metal Transport, Storage Skid Rack



Mat-Paks load from either end or either side



AlturnaMATS Mat-Paks	VersaMAT Mat-Paks	Description	Length	Width	Weight	Prop 65
AMCP3	VMCP3	Black Mat	8 ft (2.44 m)	3 ft (0.91 m)	868 lb (394 kg)	⚠ *
AMCP4	VMCP4	Black Mat	8 ft (2.44 m)	4 ft (1.44 m)	1126 lb (511 kg)	⚠ *
CMCP3	CVCP3	Clear Mat	8 ft (2.44 m)	3 ft (0.91 m)	868 lb (394 kg)	⚠ †
CMCP4	CVCP4	Clear Mat	8 ft (2.44 m)	4 ft (1.44 m)	1126 lb (511 kg)	⚠ †

⚠ * **WARNING:** This product can expose you to chemicals including Carbon Black and Nickel Compounds, which are known to the State of California to cause cancer and birth defects or other reproductive harm. For more information go to www.P65Warnings.ca.gov.

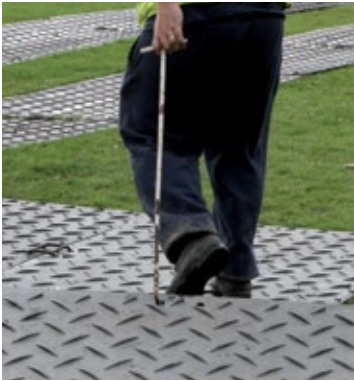
⚠ † **WARNING:** This product can expose you to chemicals including Nickel Compounds, which is known to the State of California to cause cancer and birth defects or other reproductive harm. For more information go to www.P65Warnings.ca.gov.

Handi-Hooks for AlturnaMATS® & VersaMAT® Matting

The perfect way to move mats around the work site

- Increase installation speed and save time when tracking equipment
- Reduces back stress
- Makes moving and retrieving mats easy, even in wet areas

Model	Description	Length	Weight	Prop 65
AMHH	Handi-Hook	3 ft (0.91 m)	2 lb (0.91 kg)	—



Mud-Traks® Ground Protection Mats

Mud-Traks mats provide the strength, durability and longevity you need to get through the harshest terrain. Whether on mud, sand, or swamp conditions, Mud-Traks will take you and your equipment where plywood can't. Designed with a solid fiberglass grid structure that channels tire load throughout the mat, Mud-Traks offers a more rigid surface than HDPE mats.

- Easily handled in the field, features rope handles for easy lifting
- Off-white color keeps mats cool in the heat so they will not damage lawns
- Textured on both sides for increased traction
- Does not conduct electricity
- Peak strength of 63,000 psi—very rigid, ideal for heavy multi-wheeled equipment with rubber tires (no steel tracks)
- Doesn't break or splinter
- One-year limited warranty



Surface tread	Grid tread (both sides)
Material	Fiberglass
Color options	Off white

Model	Description	Load capacity*	Thickness	Length	Width	Weight	Prop 65
N2296HD	Lawn Mat	35,000 lb (15,875 kg)	5/16 in (0.79 cm)	8 ft (2.44 m)	22 in (0.55 m)	34 lb (15.4 kg)	⚠
N3296HD	Lawn Mat	35,000 lb (15,875 kg)	5/16 in (0.79 cm)	8 ft (2.44 m)	32 in (0.81 m)	49 lb (22.23 kg)	⚠
N4596HD	Lawn Mat	35,000 lb (15,875 kg)	5/16 in (0.79 cm)	8 ft (2.44 m)	32 in (0.81 m)	68 lb (30.8 kg)	⚠
N4572HDSL	Off-Road Lite Mat	60,000 lb (27,216 kg)	3/8 in (0.95 cm)	6 ft (1.82 m)	45 in (1.14 m)	58 lb (26.3 kg)	⚠
N4596HDSL	Off-Road Lite Mat	60,000 lb (27,216 kg)	3/8 in (0.95 cm)	8 ft (2.44 m)	45 in (1.14 m)	80 lb (36.28 kg)	⚠
N3272HDS	Off-Road Super Mat	100,000 lb (45,359 kg)	0.4 in (1.02 cm)	6 ft (1.82 m)	32 in (0.81 m)	48 lb (21.77 kg)	⚠
N4572HDS	Off-Road Super Mat	100,000 lb (45,359 kg)	0.4 in (1.02 cm)	6 ft (1.82 m)	45 in (1.14 m)	74 lb (33.6 kg)	⚠
N4596HDS	Off-Road Super Mat	100,000 lb (45,359 kg)	0.4 in (1.02 cm)	8 ft (2.44 m)	45 in (1.14 m)	103 lb (46.7 kg)	⚠

*Load bearing capacity is subject to ground conditions. Sizing is subject to a manufacturing variance of +/- 5%.
⚠ WARNING: This product can expose you to chemicals including Lead, Chromium, Nickel Compounds, and Sulfur Dioxide, which are known to the State of California to cause cancer and birth defects or other reproductive harm. For more information go to www.P65Warnings.ca.gov.

Mud-Traks® Ground Protection Mats

- Strength, durability and longevity to get through the harshest terrain
- Solid fiberglass grid structure channels tire load throughout the mat—rigid surface does not roll up, break or splinter
- Peak strength of 63,000 psi—very rigid, ideal for heavy multi-wheeled equipment with rubber tires (no steel tracks)



Matting Accessories

- Handi-Hook makes moving and retrieving mats easy, even in wet areas
- Connectors lock mats together to form a semi-permanent, yet portable continuous roadway, walkway or working platform



Outrigger Pads

- Safe, efficient support for heavy equipment with outrigger arms
- High load capacity fully supports vehicles and cranes without warping or splintering
- Ideal for construction vehicles, cranes, utility vehicles and more



GeoGrid Cellular Paving System

- Permanent ground reinforcement and stabilization system—grid design disperses rain and flood water to fight erosion
- Ideal for pedestrian areas, car parks, access routes, driveways and more
- Sections interlock for fast installation without tools

